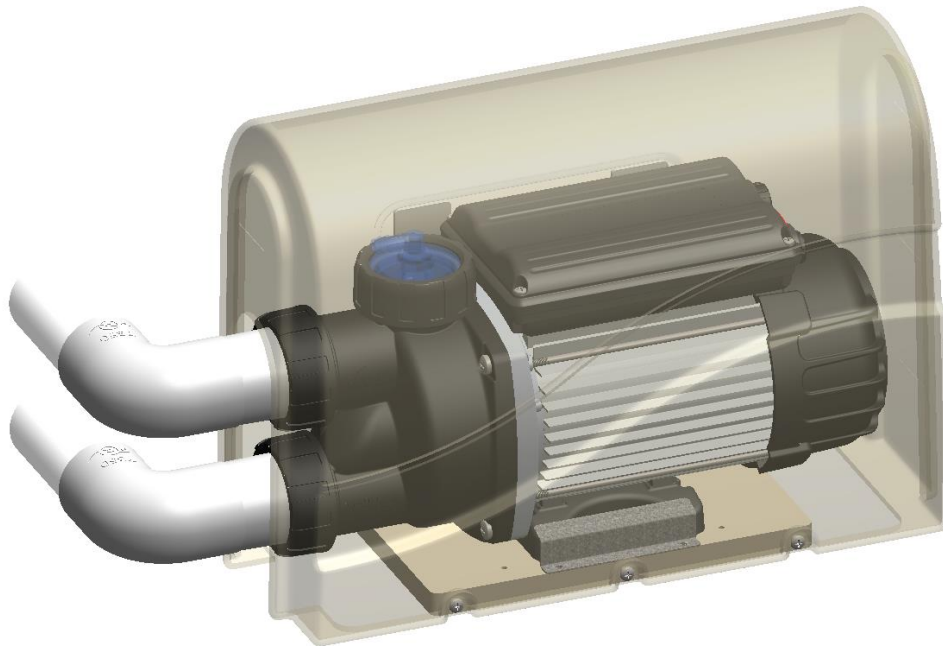
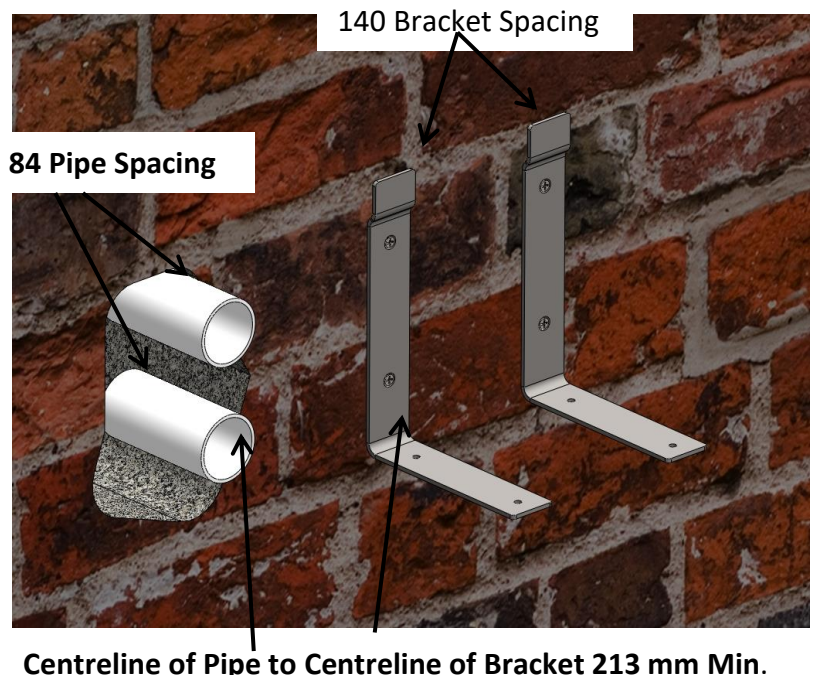


Pro-Tec Spa Bath Pump Cover

INSTALLATION INSTRUCTION



1. Read Instructions fully before commencing installation. Refer last page for Bracket Template dimensions
2. Check position of Pipe Outlets fitting through the wall
3. Mount the pump on LHS - or RHS of pipe outlets
4. Fit the two angle brackets onto the wall at correct height to suit the pump.
5. The centreline of the first bracket should be minimum 213 mm from centreline of the pipe. Refer Figure 10.
6. The horizontal bar of the brackets is mounted 61.5 mm below the centre of the lower pipe.
7. Mount the Angle brackets 140 mm apart. This will ensure the bracket mounting holes line up with the predrilled holes in the base plate.
- For Bracket Template Dimensions refer Figure 11.**
8. *Hint - you can fit the angle brackets to the base plate before mounting on the wall - this ensures the correct spacing of the angle brackets.*



Centreline of Pipe to Centreline of Bracket 213 mm Min.

Figure 1 – Bracket Installation on Wall – refer Figure 11

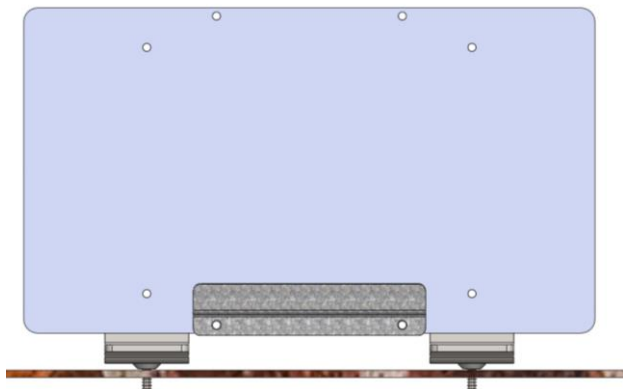


Figure 2 - Base Plate with Inner Foot Bracket – RH or LH Mount

9. Screw Inner Foot Bracket to Base Plate requires 2 X #10 X 16 Self Tapping screws (Supplied).

10. Fit the base plate - requires 4 #10 X 16 Self Tapping Screws (Supplied). The inner pump Foot Bracket is already assembled onto the base plate

11. **Different wall structure will require different Mounting method. Masonry Anchors are not supplied. To secure Angle Brackets to the wall, use Countersunk Head masonry anchors, or countersunk wood screws or appropriate securing fixture.**

12. Fit Pro-Tec Anti Vibration washer between Angle Bracket and Wall. **Without washer, cover will not fit over bracket** (Attenuates noise and vibration transmission into wall).

13. Place the pump onto the base plate - the pump mount foot will sit snug under the inside Foot Bracket. The foot bracket is designed to allow sideway positioning of the pump to match with the pipe outlet.



Figure 3 - Mounting of Bracket and Base Plate

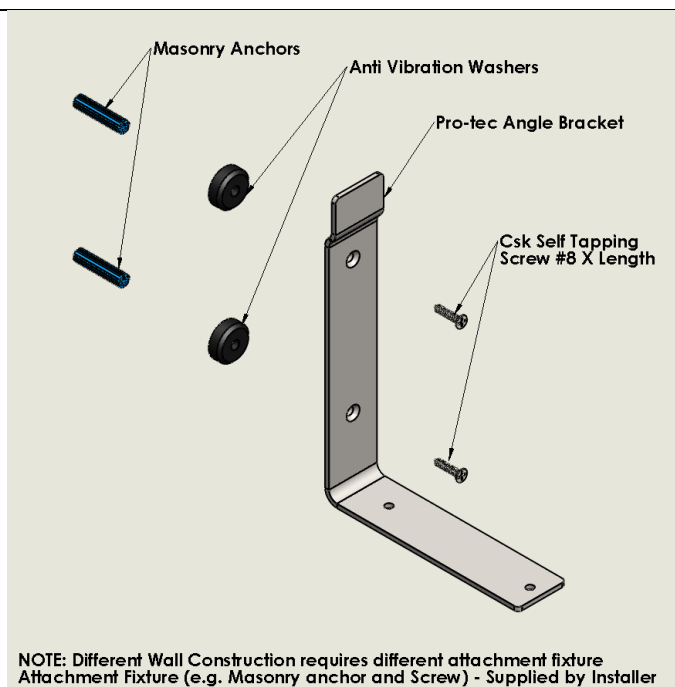


Figure 4 - Assembly of Wall Bracket

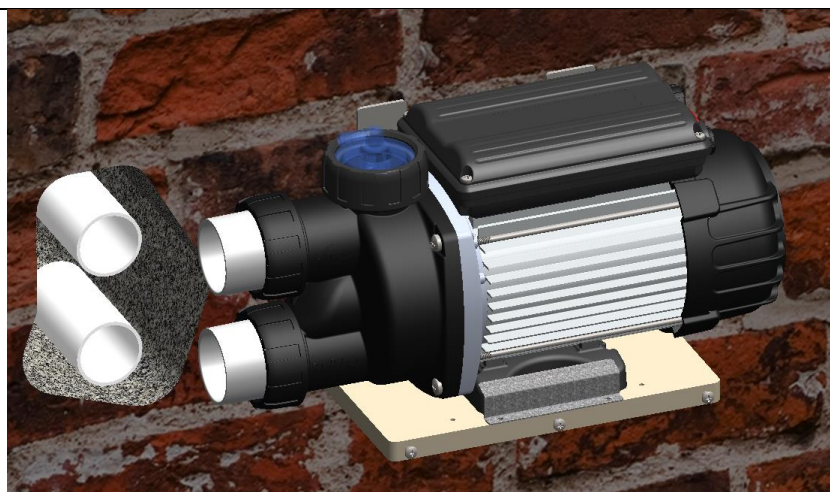


Figure 5 - Position Pump on Base Plate - LH Mount



14. Fit the outer Foot Bracket – 2 X #10 X 16 Self Tapping Screws (Supplied)
15. Connect pipework plumbing - as required. Minimum 2 - 40mm X 90 Street Elbows
16. Make sure you run the Air Tube from the Air Switch, or if electronic control, run the RJ45 cable from touchpad to the back of the Control box.

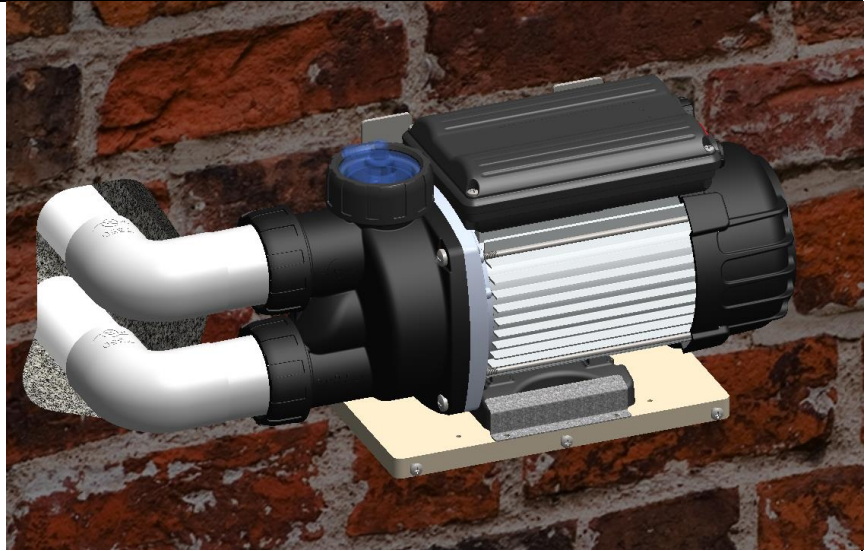
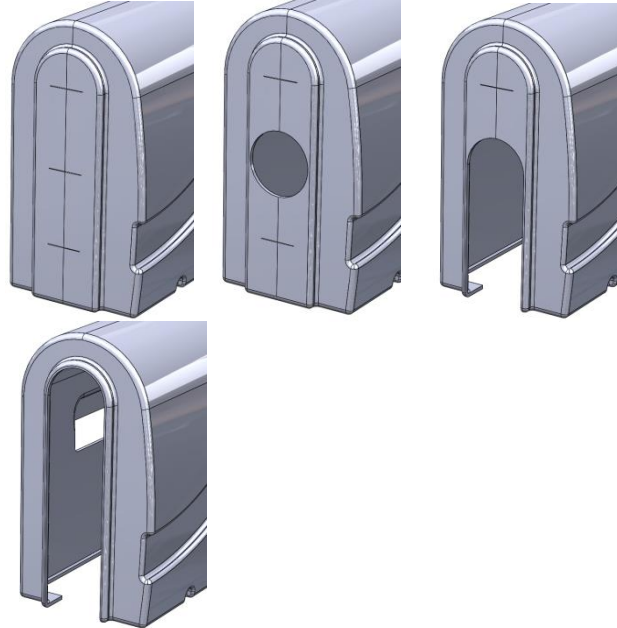


Figure 6 - Connecting the Pipework to Pump

TRIMMING THE COVER

17. Cut out the side of the Cover - either RH or LH entry. There are guide marks at each end for centring a 70 mm diameter hole. Cut the cover using a sharp knife OR use jig saw. Cut out material to suit the 2 or 3 pipe system.
18. Optional - You can order the Cover with LH or RH cutout from our factory



Centre Mark Cut 70 mm Hole 2 Pipe Cutout 3 Pipe Cutout

Figure 7 - Pump Cover Cutout Options

19. Slide Pro-Tec Cover over the top of the wall brackets. The cut out at the rear of the Cover will engage with the offset tab at the top of the angle bracket. Ensure the rear wall of the pump cover fits between base plate and the wall brackets.

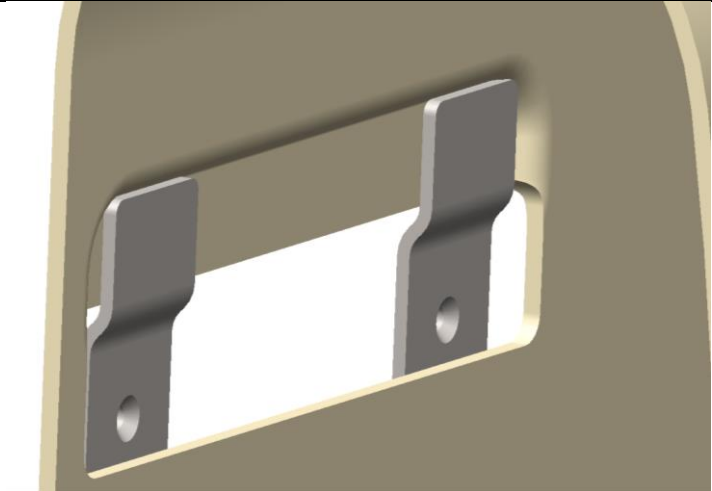


Figure 8- Fitting Pump Cover over Wall Brackets



20. Pre-drill three holes in Pump Base Plate using 3.5 mm drill - Most important!
21. Secure the Cover with the 3 #10 X 16 Self Tapping Screws (Supplied).

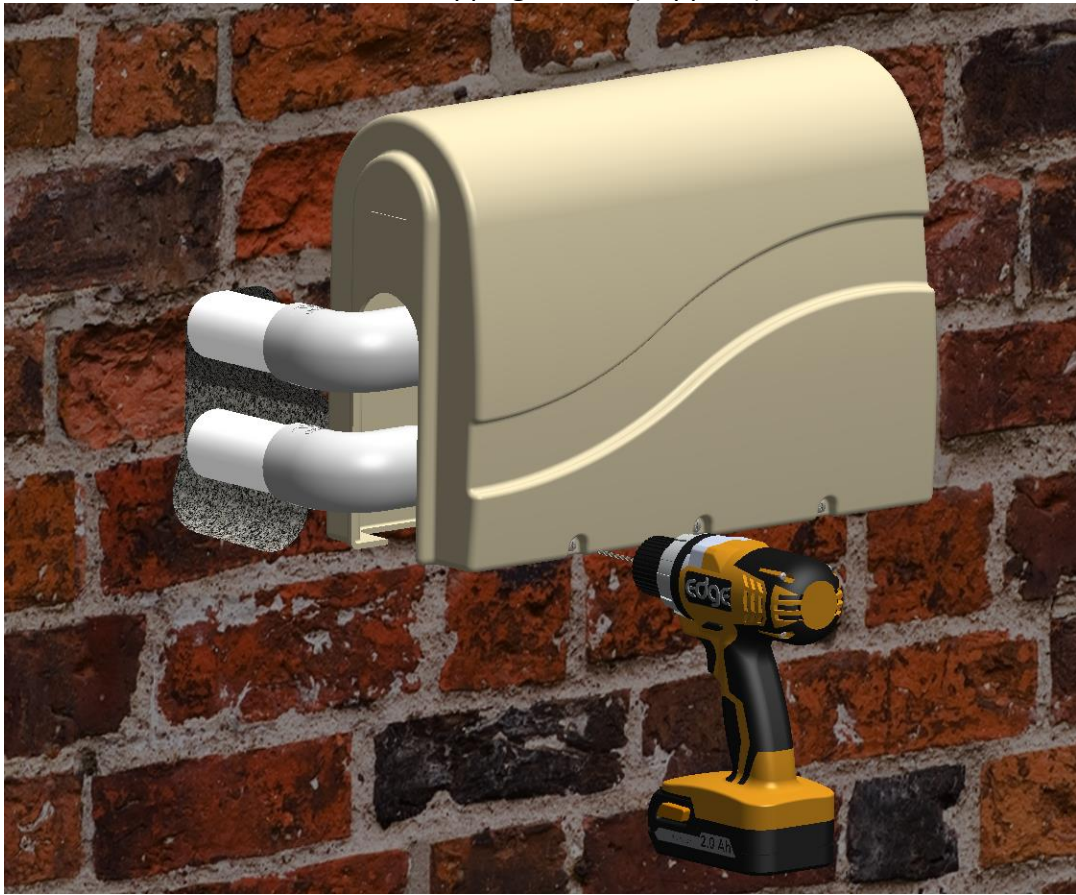


Figure 9 - Securing Pump Cover to Base Plate

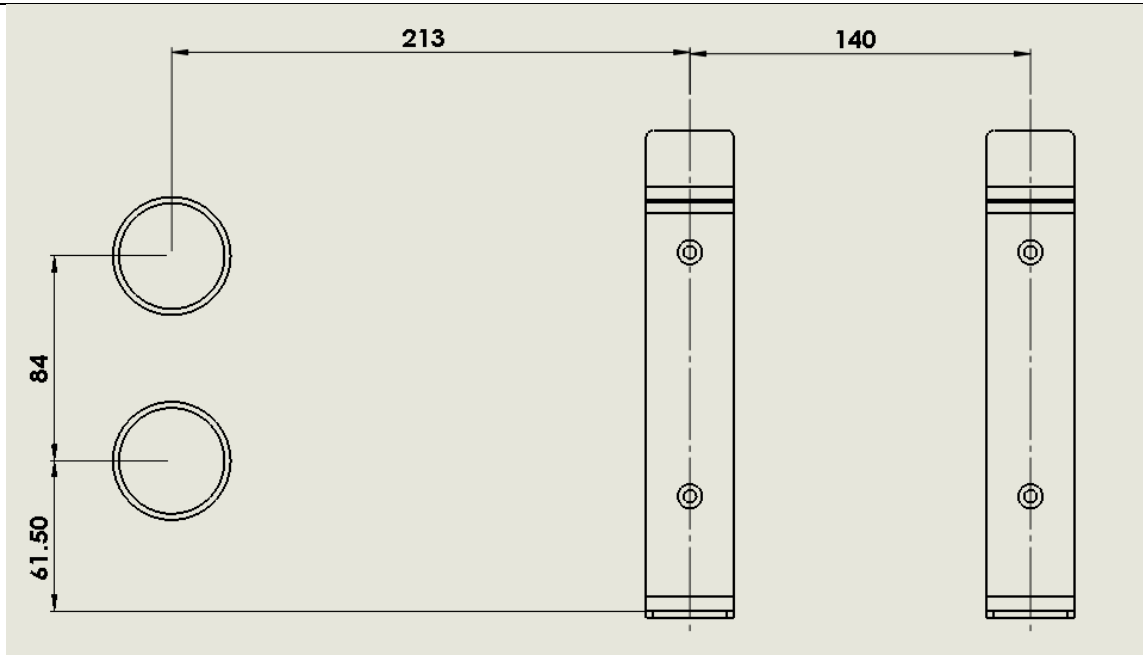


Figure 10 Bracket Template Dimensions

Edgetec Systems Pty Ltd | ABN 66 071 216 423 13

A| 13 Lieber Grove, Carrum Downs VIC 3201 Australia

P.O. Box 8503 Carrum Downs VIC 3201 Australia

T| 03 9775 0882 F| 03 9775 0881

E| sales@edgetec.net W| www.edgetec.net

Pro-Tec Installation Instructions-01DEC16.pdf

